

NP-400

rotary tablet press



MEDIUM-OUTPUT
WORKHORSE



YOU DEMAND. WE DELIVER.

natoli.com

ROBUST & POWERFUL

Designed, engineered, and manufactured in the USA, the NP-400 rotary tablet press is ideal for highly-efficient tablet production. Equipped with a long list of standard features, the NP-400 is a low-maintenance tablet press with enhanced capabilities that allow press operators to simply setup and walk away.



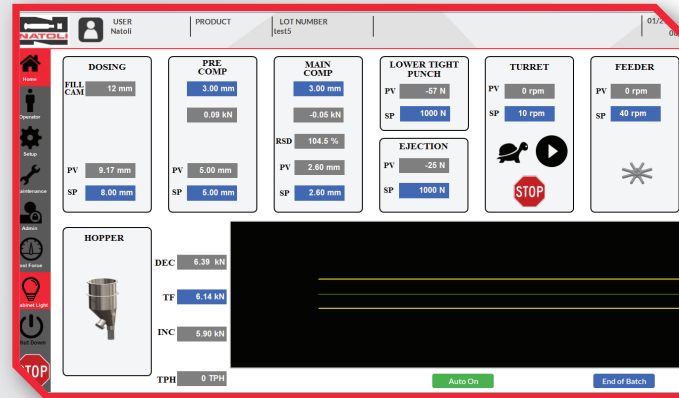
AUTOMATIC WEIGHT CONTROL

Improves product quality and consistency while reducing waste



INTUITIVE MENU CONTROL

Easily save and recall product menu settings and parameters for automatic press setup



Instrumented Force Monitoring

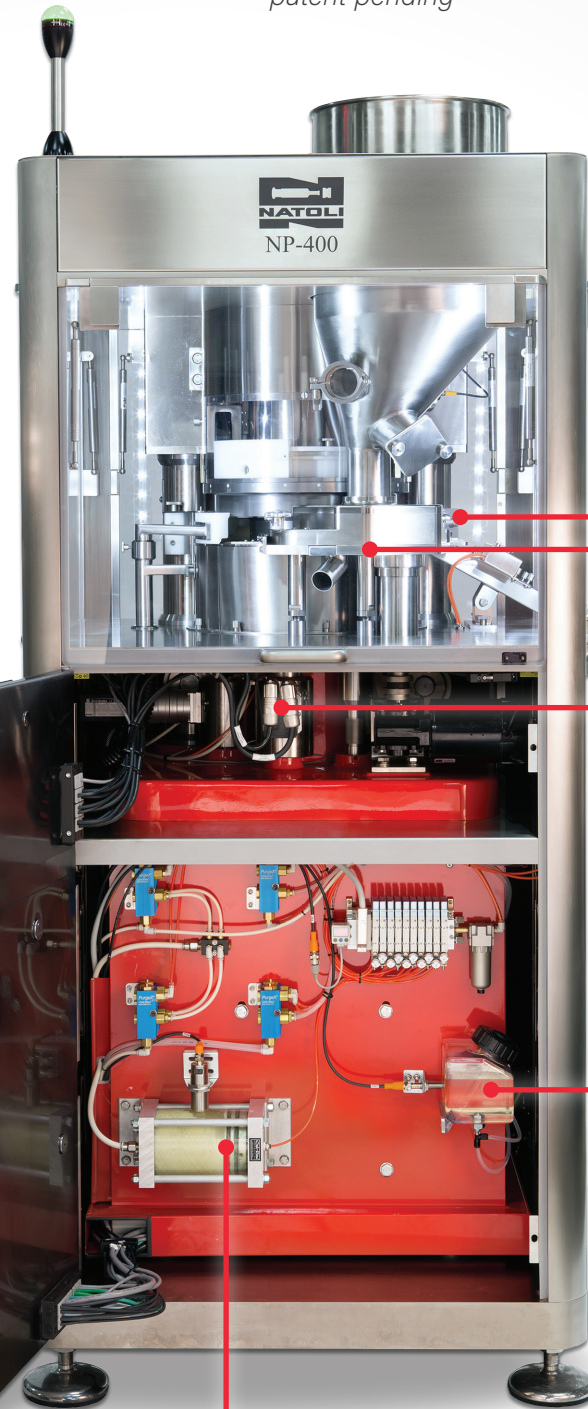
helps maintain tablet quality and improves productivity.

Combination caster/levelers

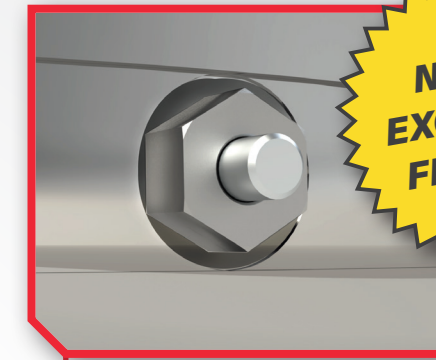
for easy mobility and setup—capable of rolling through a standard 36" door frame.



GMP compliant compression zone contains airborne formulation and reduces cleaning time.



Push-button, Self-adjusting Lower Punch Retainers* shorten installation time and reduce tooling and cam wear.
*patent pending



NATOLI EXCLUSIVE FEATURE!

Servo-driven Adjustments for tablet thickness and weight control.



Dual-Paddle Force Feeder w/ Angled Plow Design ensures consistent filling of dies for better tablet weight control.

Automatic Lubrication System keeps punches continuously lubricated during production to reduce downtime.



Punch Head Grease Delivery utilizes specially designed upper and lower cams to deliver grease to punches and cam tracks during operation.

Natoli AIM™ ProPlus Control System

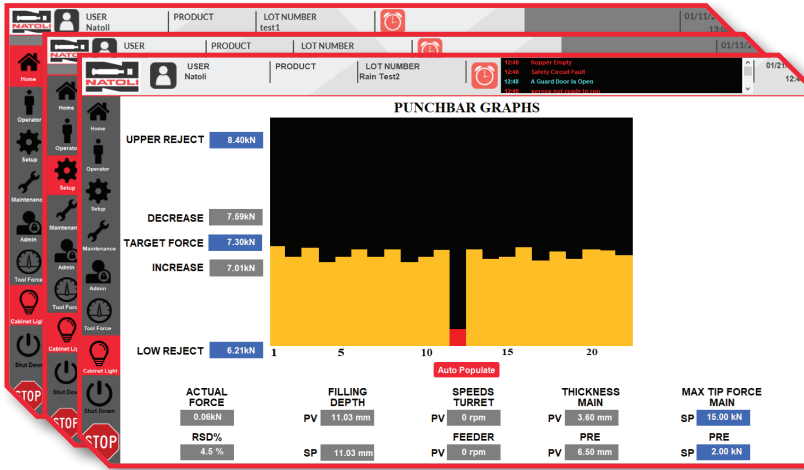
Designed for ease of use and trouble-free operation, the **Natoli AIM™ ProPlus** software collects and reports critical tablet production data within an integrated, 21 CFR Part 11–compliant system architecture.

Natoli AIM™ ProPlus Easily Reports:

- » Batch and end-of-batch production data
- » In-batch audit trail of changes during batch production
- » Critical alarms, starts, stops, and error codes by batch

Natoli AIM™ ProPlus Tracks:

- » Batch RSD monitoring for product variation
- » Tablet production data based on setup, batch, sample, and rejected tablets



NP-400 TABLET PRESS SPECIFICATIONS:

	22 STATION	28 STATION	32 STATION
TOOLING SIZES			
Punch Type	EU 1" / TSM D / MDT-25	EU19 / TSM B / MDT-19	EU19 / TSM B / MDT-19
Die Type	D	B	BB
TABLET CAPACITIES			
Max. Depth of Fill	20.6 mm (.8125")	17.5 mm (.6875")	17.5 mm (.6875")
Max. Round Diameter	23.8 mm (.9375")	17.5 mm (.6875")	16.0 mm (.6250")
Shaped Major Dimension	25.4 mm (1.0000")	19.0 mm (.7500")	16.0 mm (.6250")
Main Upper Punch Penetration	0-6.35 mm		
Pre Upper Punch Penetration	0-6.35 mm		
OPERATING FORCES			
Max. Main Comp. Force	90 kN		
Max. Pre Comp. Force	8.9 kN		
Pitch Circle Diameter	292 mm		
PRODUCTION			
Feeder Paddle Speed	5-160 rpm		
Turret Speed	10-100 rpm		
Tablets Per Minute	up to 2,200	up to 2,800	up to 3,200

Learn more about **Natoli's NP-400** production tablet press at www.natoli.com/tablet-presses or contact your Natoli representative today!



YOU DEMAND. WE DELIVER.
NATOLI ENGINEERING COMPANY, INC.
 natoli.com • info@natoli.com • +1 636.926.8900

