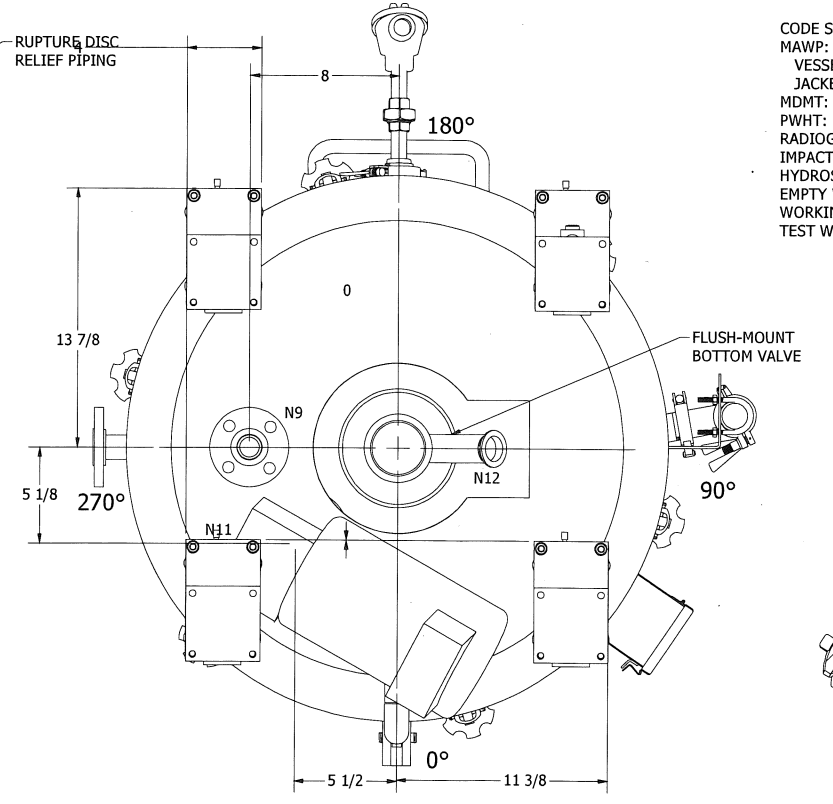


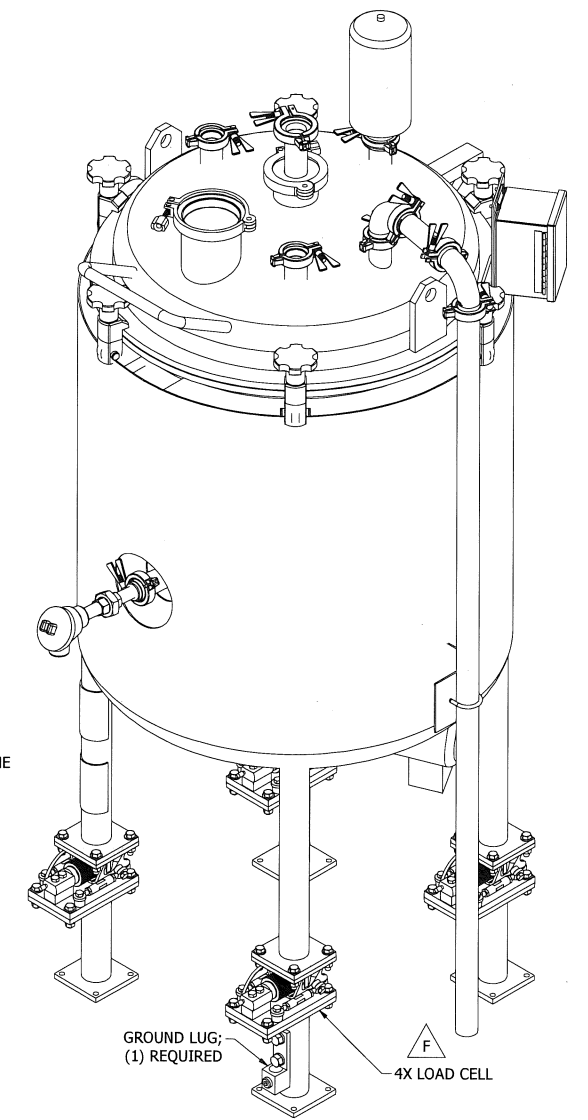
VIEW A-A



VIEW B-B

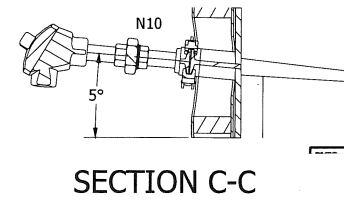
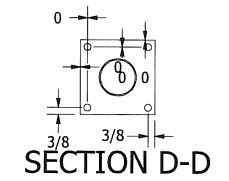
CUSTOMER: HERBALIFE
 EQUIPMENT TAG NO.: TB-X-STNK-001, 002, 003
 QUANTITY: 3
 MATERIALS:
 SHELL: SA-240 316L S.S.
 HEAD: SA-240 316L S.S.
 NOZZLES: SA-312 316L S.S.
 FLANGES: SA-312 316L S.S.
 CLAMPS: SA-240 304 S.S.
 LEGS: SA-240 304 S.S.
 DESIGN DATA:
 VESSEL TO BE DESIGNED AND MANUFACTURED PER ASME CODE SECTION VIII, DIVISION 1, 2013 EDITION
 "U"
 CODE STAMP:
 MAWP: 18 PSIG @ 100°C
 VESSEL: 150 PSIG @ 250°C
 JACKET: 40°F
 MDMT: NONE
 PWHT: NONE
 RADIOGRAPHY: NONE
 IMPACT TESTING: EXEMPT PER UHA-51(d)
 HYDROSTATIC TEST PRESSURE: 23.4 PSIG
 EMPTY WEIGHT: 383 LBS
 WORKING VOLUME: 68 GAL (257 L)
 TEST WEIGHT: 1,039 LBS

		REVISION HISTORY					
REV	DESCRIPTION	DATE	BY	CHECKED	APPROVED	ENG APPROVED	QA APPROVED
A	SEE ECN-T3419-002	11/5/2013	JAO	CLW 11/06/13	PEB 11/06/13	JKS 11/06/13	11/06/13
B	SEE ECN-T3419-006	12/17/2013	JAO	AFJ 12/19/13	JAO 12/19/13	JKS 12/19/13	KLM 12/19/13
C	SEE ECN-T3419-010	1/8/2014	JOC	CLW 1/8/14	JAO 1/8/14	TJH 1/8/14	KLM 1/8/14
D	SEE ECN-T3419-033	2/14/2014	JAO	CLW 2/14/14	JKS 2/14/14	TJH 2/14/14	KLM 2/17/14
E	SEE ECN-T3419-061	3/3/2014	JOC	CLW 3/3/14	JAO 3/3/14	TJH 3/3/14	KLM 3/3/14
F	SEE ECN-T3419-075	3/20/2014	JAO	CAM 3/20/14	DLK 3/20/14	JKS 3/20/14	KLM 3/20/14



NOTES:

- TANK TO HAVE 2" FIBERGLASS INSULATION ON BOTTOM HEAD AND SIDE WALL.
- TOP HEAD TO BE REMOVABLE WITH SPRING ASSIST HINGE. HINGE TO OPEN TO 110°-120°.
- SPRAYBALL TO BE EQUIPPED WITH A LOCATOR PIN.
- SEE DRAWING T3419-1204 FOR ELECTRICAL SCHEMATIC AND CONTROL PANEL LOCATIONS.
- ALL NOZZLES ARE CUT TO BPE SPECIFIED LENGTH.
- ALL JACKET CUTOUTS ARE ACCORDING TO BPE SPECIFICATIONS.
- LEGS ARE Ø2" OD TUBE X 1/8" WALL.



NOZZLE SCHEDULE				
NOZZLE	DESIGNATION	SIZE	MATERIAL	CONNECTION
PURIFIED WATER INLET	N1	1.5"	SA-312 316L	HYGENIC CLAMP
VENT FILTER	N2	1.5"	SA-312 316L	HYGENIC CLAMP
CIP SPRAYBALL	N3	3"	SA-312 316L	HYGENIC CLAMP
SPARE	N4	1.5"	SA-312 316L	HYGENIC CLAMP
RUPTURE DISC	N5	1.5"	SA-312 316L	HYGENIC CLAMP
SOLIDS ADDITION	N6	4"	SA-312 316L	HYGENIC CLAMP
JACKET RELIEF VALVE	N7	.75"	SA-312 316L	150# FLANGE
JACKET INLET	N8	1"	SA-312 316L	150# FLANGE
JACKET OUTLET	N9	1"	SA-312 316L	150# FLANGE
TEMPERATURE RTD	N10	1"	SA-312 316L	HYGENIC CLAMP
AGITATOR	N11	2 HP	SA-312 316L	N/A
BOTTOM OUTLET	N12	1.5"	SA-312 316L	HYGENIC CLAMP